

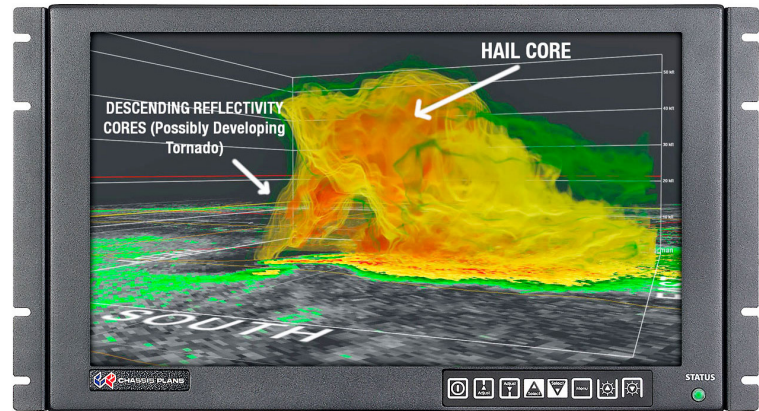
CPX

6RU WIDE  
SCREEN LCD  
MONITOR

## RUGGED DISPLAY

The CPX2-173 provides a high performance, rack mount 6U TFT Wide Screen LCD display with 1920 x 1080 resolution. Offered is a standard brightness or daylight viewable hibright LCD. Various LCD enhancements such as an oleophobic antireflective and/or ITO EMI bonded overlay and a RhinoTouch touch screen can be specified.

Electrical components are selected for their inherent ruggedness and revision control, and there is locking stainless hardware throughout.



Chassis Plans' 2U-5U rackmount computer systems are designed with a removable back plate that allows a 12V power cord to run from the computer's power supply to a display or keyboard video monitor. This optional feature, the Exterior Power Jack, is available for this monitor. By running the display with the computer systems' power supply, this Exterior Power Jack option can provide many benefits:

- Reduction in the number of required cables
- Elimination of additional equipment, i.e., a power brick
- Reduction in total system weight and cost

To enjoy these benefits, power up your new display with a Chassis Plans' server.

## APPLICATIONS

- Airborne Operations
- Land-based Operations
- Seaborne Operations
- Telemetry
- Diagnostics
- Simulation
- C4ISR
- Communications
- Imaging
- Persistent Surveillance
- UAVs
- Automation
- Severe Environment Operations

## FEATURES

- Lightweight aluminum construction
- Long-life LCDs
- Optional resistive touch screen

## Who We Are

CP Technologies designs, fabricates and integrates standard and customized high-performance computing platforms and LCD monitors for military, industry, and commercial applications.

Using COTS components, CP Technologies provides solutions for customers who need reliable systems that will operate in a variety of harsh conditions and who require revision control and hardware consistency for multi-year programs.

CP Technologies is an ITAR Registered and ISO 9001:2015 Certified business that has been operating in Southern California for over twenty years.

**Assembled in the USA**  
**ISO 9001:2015 Certified**  
**ITAR Registered**

**CP Technologies**  
2620 Deep Well Ranch Rd  
Prescott, AZ 86301  
combatproven.tech  
858.571.4330



# TECH SPECS

## MONITOR SPECIFICATIONS

<b>SCREEN DIAGONAL</b>	17.3"
<b>CONTRAST RATIO</b>	600:1
<b>VIEWING ANGLE</b>	80° (L/R/U/D)
<b>RESPONSE TIME</b>	40ms
<b>NATIVE RESOLUTION</b>	1920 x 1080
<b>BRIGHTNESS</b>	400 cd/m2 (1000 cd/m2 with Hi-Bright)
<b>BACKLIGHT</b>	LED
<b>COLORS</b>	16.7M
<b>POWER INPUT</b>	AC input 85 to 264VAC, 1275/704 28VCD
<b>POWER DISSIPATION</b>	42 Watts (49 Watts with Hi-Bright)
<b>EXTERIOR POWER JACK</b>	Yes (optional)
<b>SUPPORTED RESOLUTIONS</b>	VGA (640 x 480) WVGA (800 x 480) SVGA (800 x 600) XGA (1024 x 768) SXGA (1280 x 1024) WXGA (1366 x 768) WSXGA+ (1680 x 1050) WXGA (1280 x 768, 1280 x 800, 1440 x 900) HD-1080 (1920 x 1080) WUXGA (1920 x 1200)

	<b>STANDARD</b>	<b>ADVANCED HD-SDI</b>
<b>STANDARD INPUTS</b>	VGA DVI-D PAL/NTSC/SECAM HD-SDI - SMPTE259M, 4.2.2 HDMI 1.3	VGA HD-SDI - SMPTE259M, 4.2.2 HDMI 1.3 Display Port SDI Re-Clock Loop Output
<b>OPTIONAL INPUTS</b>	Composite HD Component YPbPr SD Component YCbCr	
<b>FEATURES</b>	Image Up-Scaling Image Down-Scaling Picture-in-Picture Memory Buffer Sync on Green/Composite Ethernet Command Protocol Picture-by-Picture Text Overlay Function Variable Aspect Freeze and Zoom Programmable Hotkeys	Image Up-Scaling Image Down-Scaling Sync on Green/Composite Programmable Hotkeys

# TECH SPECS



## CHASSIS SPECIFICATIONS

<b>DIMENSIONS</b>	19" X 10.47" X 3.2" (482.6mm X 265.9mm X 81.3mm)
<b>SHIPPING WEIGHT</b>	9.7lbs (4.39985kg)
<b>CONSTRUCTION</b>	High-strength 5052-H32 aircraft-grade aluminum
<b>POWDERCOATING</b>	Black per MIL-PRF-24712, Type IV, Class 3, Cardinal C214-BK110 polyester semi-gloss, fine texture
<b>PLATING</b>	Chem-Film per MIL-C-5541F, Class 1A
<b>MOUNTING OPTIONS</b>	Rack mounting, panel mounting, VESA 100

## HARSH ENVIRONMENTS

Designed to meet or exceed MIL-STD-810G to the below specifications.

<b>ALTITUDE</b>	MIL-STD-810, Method 500.6
<b>HIGH TEMPERATURE</b>	70°C Operational, 70°C Storage MIL-STD-810, Method 501.6
<b>LOW TEMPERATURE</b>	-10°C Operational, -20°C Storage MIL-STD-810, Method 502.6
<b>HUMIDITY</b>	5-95%, Non-condensing MIL-STD-810, Method 507.6
<b>BLOWING SAND AND DUST</b>	Procedures I and II MIL-STD-810, Method 510.6
<b>TRANSPORT VIBRATION</b>	MIL-STD-810, Method 514.7
<b>BENCH HANDLING SHOCK</b>	MIL-STD-810, Method 516.7

### QUESTIONS?

Reach out to us at  
combatproven.tech  
or call 858.571.4330

## ENGINEERED TO YOUR SPECIFICATIONS

- In-house engineering department
- Design and build of rapid prototypes. Experience with solving difficult customer application problems through knowledge of the industry and custom system design and manufacturing capability
- Our Engineers use Solid Works 3D CAD modeling software for mechanical design and thermal simulation
- Design experience with MIL-STD-167, MIL-STD-461, MIL-STD-810, and MIL-S-901, in addition to FCC, UL, CE, and country specific agency requirements

## REVISION CONTROL & CONFIGURATION MANAGEMENT

- Our Program Managers will assure your products are revision controlled for the life of the program
- Configuration Management to assure TAA Compliance and system compatibility
- One part number for life of the program
- Counterfeit and obsolescence management

## FACILITY AND TEST

- All integration work is performed in a state-of-the-art, ESD-controlled facility
- Our facility has 23,000 sqft and has dedicated 12,000 sqft to manufacturing and 3,000 sqft to engineering
- Operate to anti-static standard ANSI/ESD S20.20-2007 and electronics assembly standard IPC-A-610, Revision E-2010

## QUALITY COUNTS

- ISO 9001:2015 Certified
- 100% system inspection before shipment
- All integrated systems undergo a minimum 24-hour system test and burn-in before shipment to the customer
- Assistance with 3rd party verification of system specifications
- 5-year warranty on all servers and 3-year warranty on LCD monitor products
- TAA compliant
- Built in the USA

**CP Technologies**  
2620 Deep Well Ranch Rd  
Prescott, AZ 86301