



Features

- Complete Serial FPDP record and playback system
- Up to eight I/O channels in a single 4U or 5U 19 inch industrial rackmount PC server chassis
- Supports Flow Control, CRC, and Copy/Loop Mode as a receiver and transmitter
- Supports 1.0625, 2.125, 2.5, 3.125 and 4.25 GBaud link rates
- Copper, single-mode and multi-mode fiber interfaces available
- Real-time aggregate recording rates of up to 1.6 GB/sec
- Up to 100 terabytes of storage to NTFS RAID disk array
- RAID levels of 0, 1, 5, 6, 10 and 50
- SystemFlow® GUI virtual instrumentation panel for fast, intuitive operation
- C-callable API for integration of recorder into application
- File headers include time stamping and recording parameters
- Optional GPS time and position stamping
- Windows® 7 Professional workstation with high performance Intel® Core™ i7 processor

Contact factory for options, number of channels, recording rates, and disk capacity.

General Information

The Talon® RTS 2716 is a complete turn-key recording system capable of recording and playing multiple Serial FPDP data streams. It is ideal for capturing any type of streaming sources including live transfers from sensors or data from other computers and is fully compatible with the VITA 17.1 specification. Using highly-optimized disk storage technology, the system achieves aggregate recording rates up to 1.6 GB/sec.

The RTS 2716 can be populated with up to eight SFP connectors supporting Serial FPDP over copper, single-mode, or multi-mode fiber, to accommodate all popular Serial FPDP interfaces. It is capable of both receiving and transmitting data over these links and supports real-time data storage to disk.

Programmable modes include flow control in both receive and transmit directions, CRC support, and copy/loop modes. The system is capable of handling 1.0625, 2.125, 2.5, 3.125 and 4.25 GBaud link rates supporting data transfer rates of up to 420 MB/sec per Serial FPDP link.

Optional GPS time and position stamping allows the user to mark the beginning of a recording in the recording file's header.

SystemFlow Software

The RTS 2716 includes the SystemFlow Recording Software. SystemFlow features a Windows-based GUI (Graphical User Interface) that provides a simple and intuitive means to configure and control the system.

Custom configurations can be stored as profiles and later loaded as needed, allowing the user to select preconfigured settings with a single click.

Built on a server-class Windows 7 Professional workstation, the RTS 2716 allows the user to install post-processing and analysis tools to operate on the recorded data.

The RTS 2716 records data to the native NTFS file system, providing immediate access to the recorded data.

Data can be off-loaded via two gigabit Ethernet ports or six USB 2.0 ports. Additionally, data can be copied to optical disk, using the 8X double layer DVD±R/RW drive.

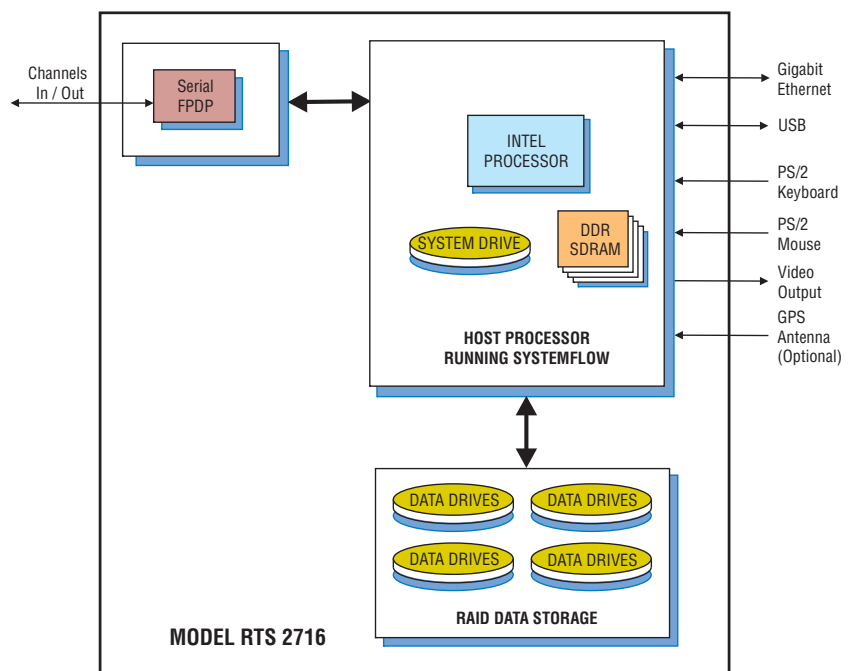
Flexible Architecture

The RTS 2716 is configured in a 4U or 5U 19" rack-mountable chassis, with hot-swap data drives, front panel USB ports and I/O connectors on the rear panel.

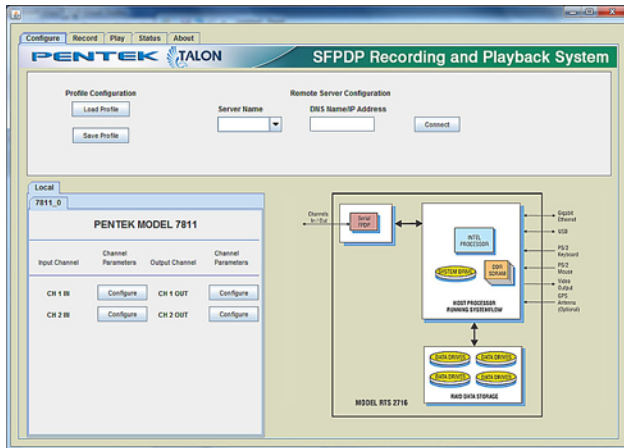
Systems are scalable to accommodate multiple chassis to increase channel counts and aggregate data rates.

All recorder chassis are connected via Ethernet and can be controlled from a single GUI either locally or from a remote PC.

Multiple RAID levels, including 0, 1, 5, 6, 10 and 50, provide a choice for the required level of redundancy. The hot-swappable HDDs provide storage capacities of up to 100 TB in a single 6U chassis. ➤



► SystemFlow Graphical User Interface

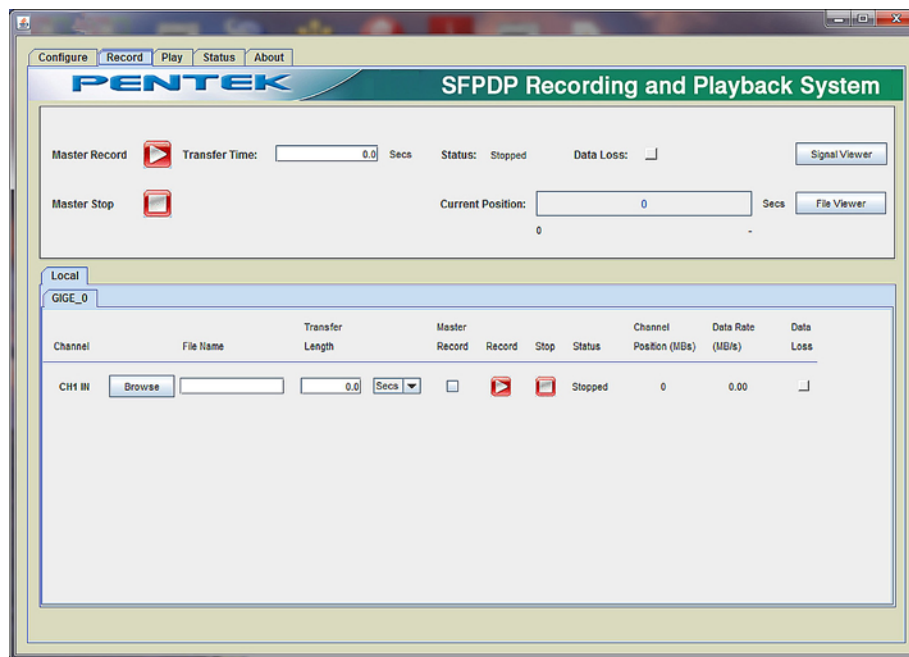


SystemFlow Main Interface

The RTS 2716 GUI shows a block diagram of the system and provides the user with a control interface for the recording system. It includes Configure, Record, Playback, and Status screens, each with intuitive controls and indicators. The user can easily move between screens to configure parameters, control and monitor a recording, and play back a recorded stream.

SystemFlow Hardware Configuration Interface

The Configure screen presents operational system parameters including temperature and voltages. Parameters are entered for each input or output channel specifying the flow control settings and the recognition of a CRC in the data stream. Each channel can also be set up to utilize Serial FPDP's copy/loop mode. All parameters contain limit-checking and integrated help to provide an easier-to-use out-of-the-box experience.



SystemFlow Record Interface

The Record screen allows you to browse a folder and enter a file name for the recording. The length of the recording for each channel can be specified in megabytes or in seconds. Intuitive buttons for Record, Pause and Stop simplify operation. Status indicators for each channel display the mode, the number of recorded bytes, and the average data rate. A Data Loss indicator alerts the user to any problem, such as a disk full condition.

By checking the Master Record boxes, any combination of channels in the lower screen can be grouped for synchronous recording via the upper Master Record screen. The recording time can be specified, and monitoring functions inform the operator of recording progress. ►

► SystemFlow API

SystemFlow includes a complete API (Application Programming Interface) that supports control and status queries of all operations of the RTS 2716 from a custom application.

High-level C-language function calls and the supporting device drivers allow users to incorporate the RTS 2716 as a high-performance server front end to a larger system. This is supported using a socket interface through the Ethernet port, either to a local host or through an internet link for remote, stand-alone acquisition. Recorded NTFS files can be easily retrieved through the same connection.

Specifications

PC Workstation

Operating System: Windows 7 Professional

Processor: Intel Core i7 processor

Clock Speed: 3.0 GHz or greater

SDRAM: 6 GB

RAID

Storage: 2.0–100.0 TB

Drive Type: 3.5" HDD

Supported Levels: 0, 1, 5, 6, 10 and 50

Serial FPDP Interface

Copper - Option 280

Cable: 100-ohm shielded twin-ax

Connector Type: SFP+

Max. Cable Length: 20 m

Multi-mode Fiber Optical - Option 281

Cable: Multi-mode fiber, 850 nm

Connector Type: LC

Max. Cable Length: Up to 300 m

Single-mode Fiber Optical - Option 282

Cable: Single-mode fiber

Connector Type: LC

Max. Cable Length: Up to 10 km

Physical and Environmental

Dimensions

Full 4U Chassis: 19" W x 26" D x 7" H

Weight: 30 – 80 lb

Operating Temp: +5° to +45° C

Storage Temp: –40° to +85° C

Relative Humidity: 5 to 95%, non-condensing

Power Requirements: 100 to 240 VAC, 50 to 60 Hz, 500 W max.

Model RTS 2716 Ordering Information and Options

Channel Configuration

Option -204 4-channel recording

Option -208 8-channel recording

SFPDP Interface

Option -280 SFP+ connectors

Option -281 Multi-mode optical, LC connectors

Option -282 Single-mode optical, LC connectors

Storage Options

Option -406 2.0 TB HDD storage capacity 400 MB/sec

Option -411 4.0 TB HDD storage capacity 400 MB/sec

Option -416 8.0 TB HDD storage capacity 800 MB/sec

Option -421 16.0 TB HDD storage capacity 1.6 GB/sec

Option -423 20.0 TB HDD storage capacity 1.6 GB/sec

Option -439 30.0 TB HDD storage capacity 1.6 GB/sec

Option -450 45.0 TB HDD storage capacity 1.6 GB/sec

Option -460 60.0 TB HDD storage capacity 1.6 GB/sec

Option -480 100.0 TB HDD storage capacity 1.6 GB/sec

Note: Options -450 and -460 require a 5U Chassis; Option -480 requires a 6U chassis

General Options (append to all options)

Option -261 GPS time & position stamping

Option -264 IRIG-B time stamping

Contact Pentek for compatible Option combinations

Storage and Channel-count Options may change, contact Pentek for the latest information

Specifications subject to change without notice